

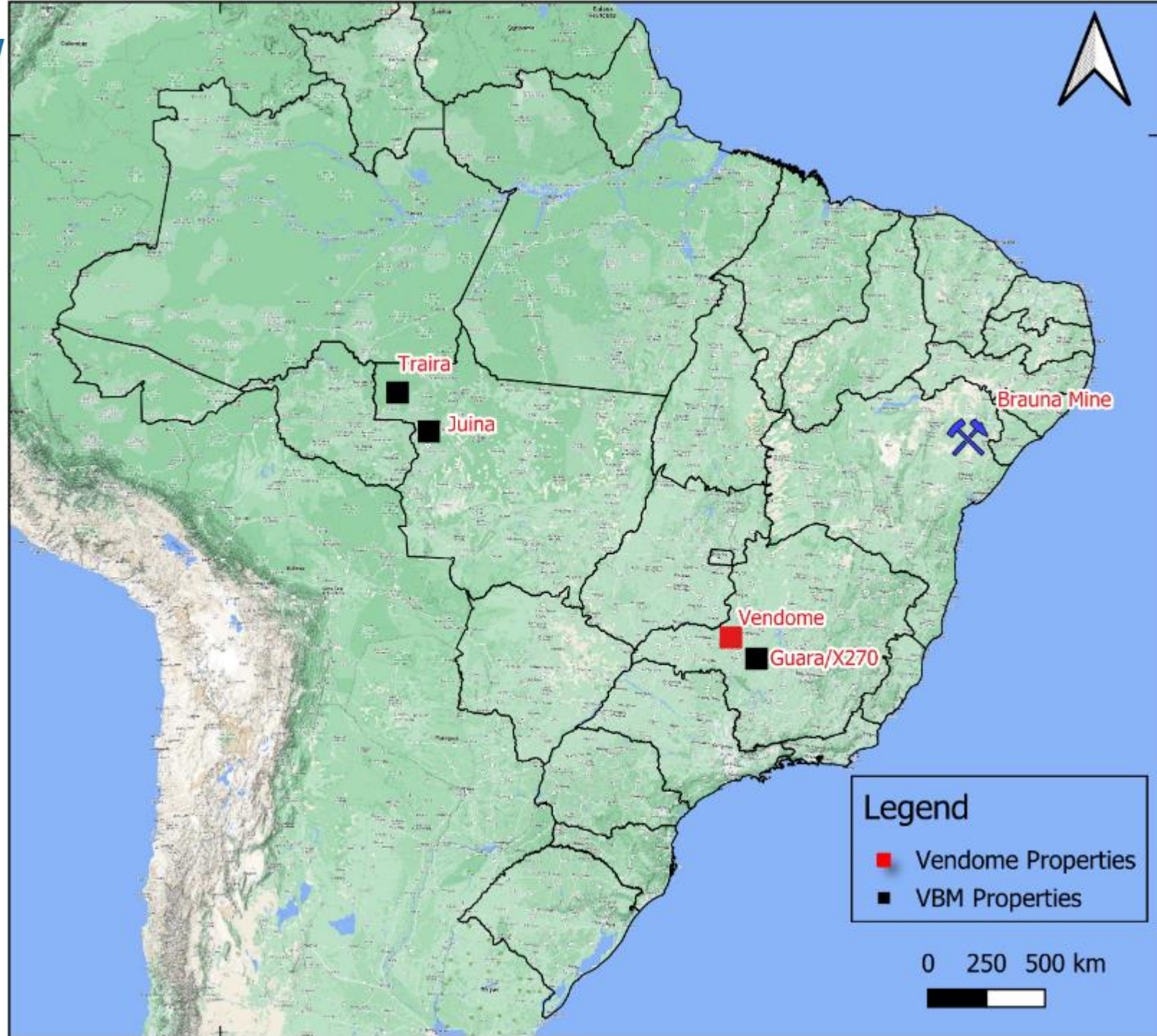


TRES-OR's VENDOME DIAMOND  
PROJECTS IN THE  
COROMANDEL AREA  
BRAZIL

## ***Vendome Properties***

Vendome Mine Mineração Importação Exportação e Pesquisa Ltda. and Antônio Ione Teixeira De Jesus (collectively referred to as “**Vendome**”) provides Tres-Or’s 100% owned subsidiary Vaaldiam (“**VBM**”) with an exclusive right to develop kimberlite diamond deposits on their properties, situated in the Coromandel diamond district of Minas Gerais State, Brazil.

Vendome holds 7 blocks of mineral licenses, covering roughly 29,175 hectares. Tres-Or’s priority exploration will focus on 5 blocks where the 27 kimberlites are located and where there is a long history of alluvial diamond recoveries from river gravels that cross-cut the district.



## ***Vendome Permits in the Coromandel Area***

OWNER	Priority	Claim	AREA (ha)	STATE	Area	STATUS
Vendome	P1	<b>831285/2017</b>	1,962.58	Minas Gerais	Coromandel	Exploration permit
Vendome		<b>832088/2017</b>	195.57	Minas Gerais	Coromandel	Exploration permit
Vendome		<b>833717/2013</b>	1,938.33	Minas Gerais	Coromandel	Mining application
Vendome		<b>832100/2017</b>	210.9	Minas Gerais	Coromandel	Exploration permit
Antonio Teixeira	P2	<b>830262/2019</b>	1,955.62	Minas Gerais	Coromandel	Exploration permit
Antonio Teixeira		<b>830261/2019</b>	1,930.66	Minas Gerais	Coromandel	Exploration permit
Vendome	P3	<b>831808/2015</b>	689.47	Minas Gerais	Coromandel	Mining Concession
Vendome		<b>833440/2014</b>	827.97	Minas Gerais	Coromandel	Exploration permit
Vendome		<b>831987/2018</b>	1,958.38	Minas Gerais	Coromandel	Exploration application
Vendome		<b>831669/2013</b>	437.77	Minas Gerais	Coromandel	Exploration permit
Vendome	P4	<b>831986/2018</b>	1,829.95	Minas Gerais	Coromandel	Exploration application
Vendome		<b>830610/2011</b>	1,676.90	Minas Gerais	Coromandel	Exploration permit
Antonio Teixeira		<b>830914/2009</b>	49.19	Minas Gerais	Coromandel	PLG application
Antonio Teixeira		<b>830913/2009</b>	44.87	Minas Gerais	Coromandel	PLG application
Vendome		<b>831734/2016</b>	1,723.80	Minas Gerais	Coromandel	Exploration application
Vendome		<b>831733/2016</b>	1,999.87	Minas Gerais	Coromandel	Exploratio application
Antonio Teixeira	P5	<b>832190/2023</b>	885.40	Minas Gerais	Coromandel	Exploration application

## Vendome Priority Properties and Associated Kimberlites:

### Vendome P1:

- ❖ Sto.Ant. Bonito 2
- ❖ Sto.Ant. Bonito 4
- ❖ Sto. Inacio 7
- ❖ Pedras 1
- ❖ Pedras 2
- ❖ Corrego Manoel 1
- ❖ Guara 9
- ❖ Guara 10
- ❖ Guara 11
- ❖ Guara 18

### Vendome P2:

- ❖ Santa Clara 9
- ❖ Santa Clara 11
- ❖ Tamborete 1
- ❖ Tamborete 2
- ❖ Tamborete 3
- ❖ Bravo 11
- ❖ Bravo 12
- ❖ Bravo 13
- ❖ Bravo 15
- ❖ Bravo 16
- ❖ Santa Rosa 5

### Vendome P3:

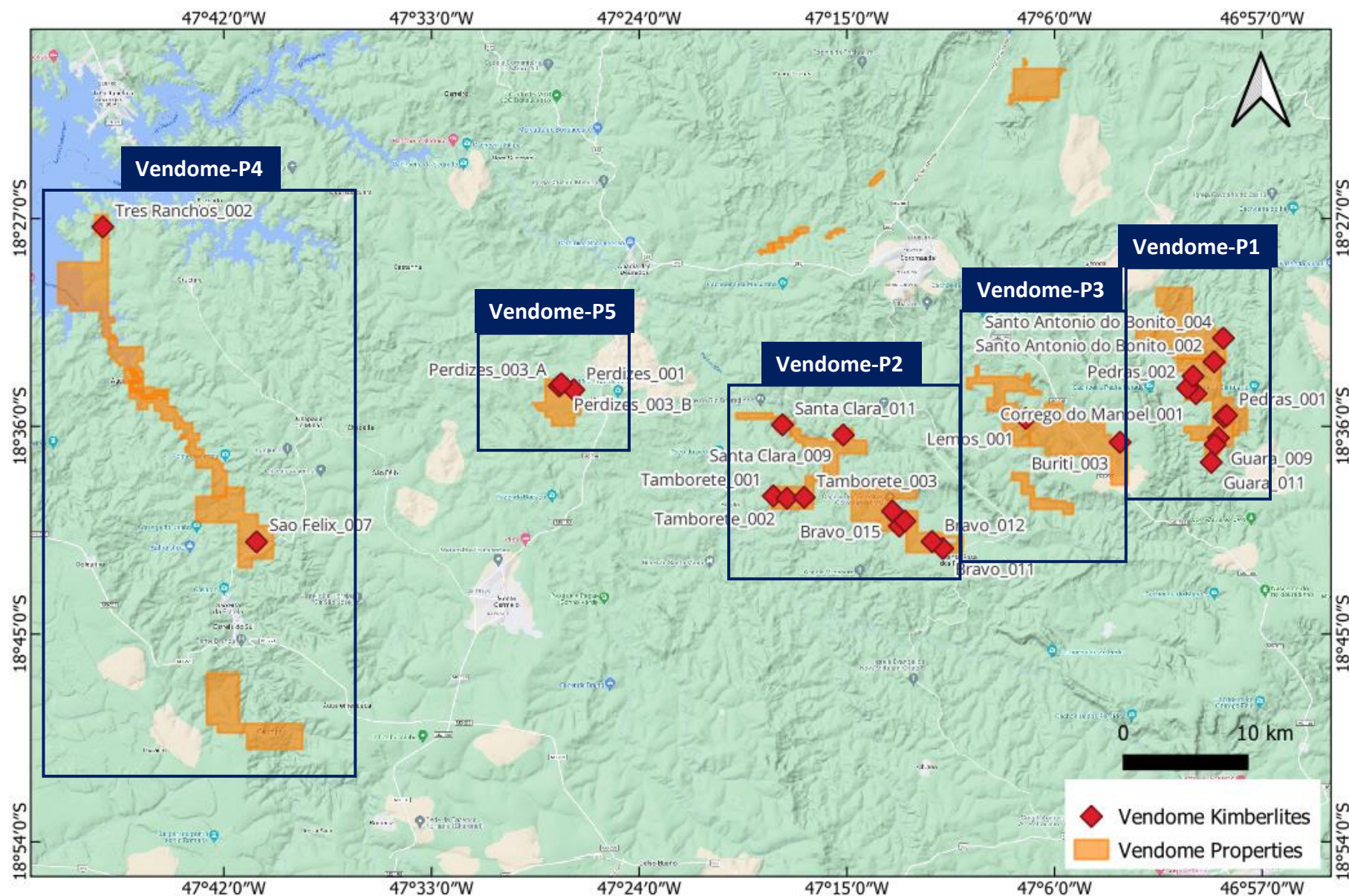
- ❖ Lemos 1
- ❖ Buriti 3

### Vendome P4:

- ❖ Três Ranchos 2
- ❖ São Felix 7

### Vendome P5:

- ❖ Perdizes 1
- ❖ Perdizes 3A
- ❖ Perdizes 3B



**Sto. Inacio River Diamonds** - source of largest Diamond recovered in Brazil the Charneca I (428cts - 1940), Charneca II (107cts - 1971); Charneca III (105cts - 1971).

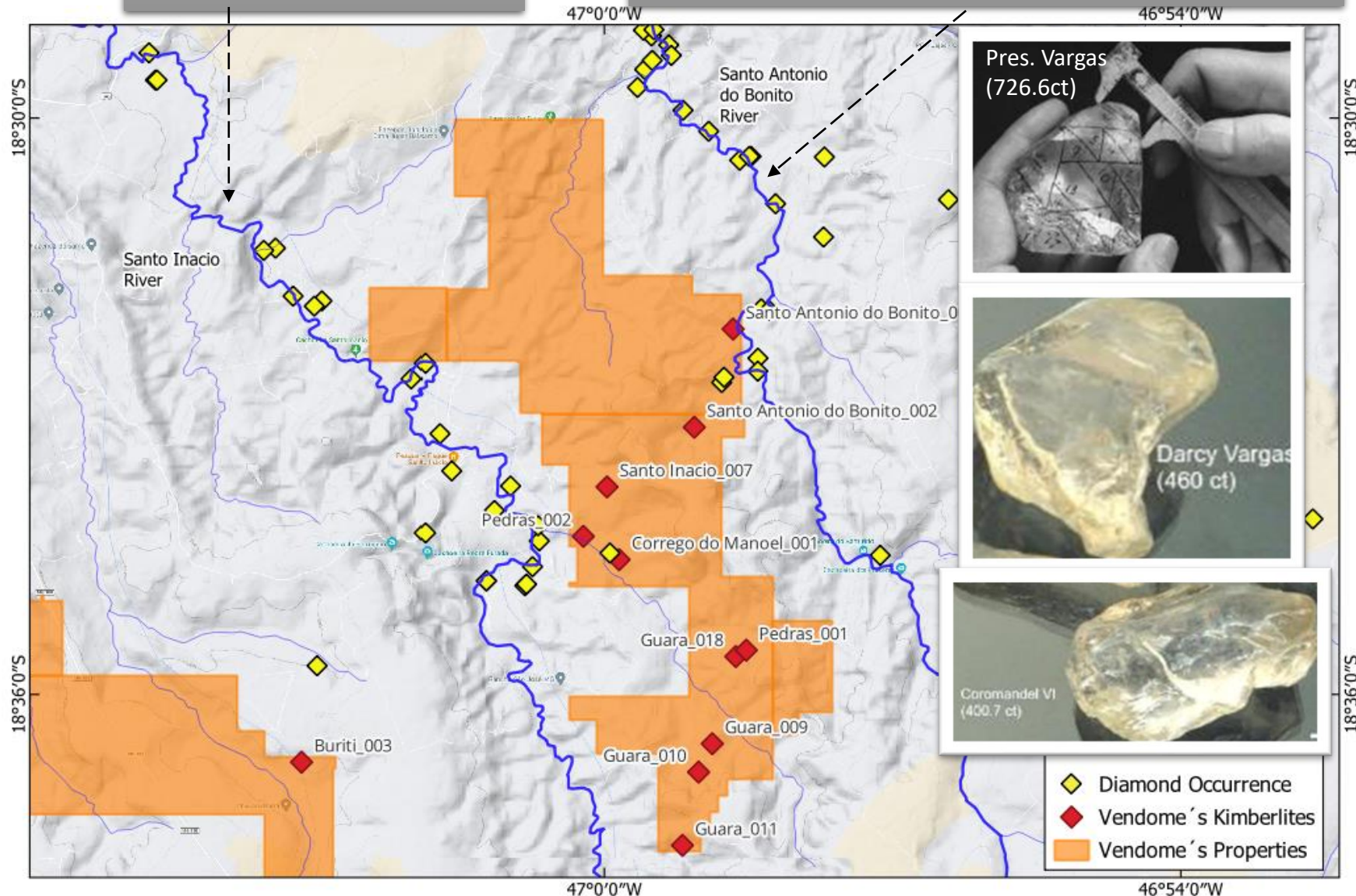
**Sto. Antonio do Bonito River Diamonds** - source of the largest Diamond recovered in Brazil the Presidente Vargas in 1938 (726,6cts), and other important ones: Sto. Antonio (602cts); Darcy Vargas (460cts); Coromandel IV (400.7cts); Diário de Minas (375cts); Bonito I (346cts); Vitoria II (328cts); and dozens of other large stones.

**Vendome P1 - Kimberlites:**

- Sto.Ant. Bonito 2: outcropping not tested.
- Sto.Ant. Bonito 4: outcropping not tested.
- Sto. Inacio 7: not tested/evaluated.
- Pedras 1: not tested/evaluated.
- Pedras 2: garimpo activity.
- Corrego Manoel 1: mine/garimpo activity.
- Guara 9: not tested/evaluated
- Guara 10: not tested/evaluated
- Guara 11: outcropping not tested.
- Guara 18: garimpo activity downstream.

**Property Merits:**

- Tres-Or's priority exploration area for a primary diamond source in vicinity of the Vendome alluvial activities;
- Focus on kimberlites close to diamond occurrences where recoveries of large and fancy-colored stones reported;
- Explore for kimberlite(s) source for the Sto. Inacio and Sto. Antonio do Bonito Rivers alluvial diamonds.

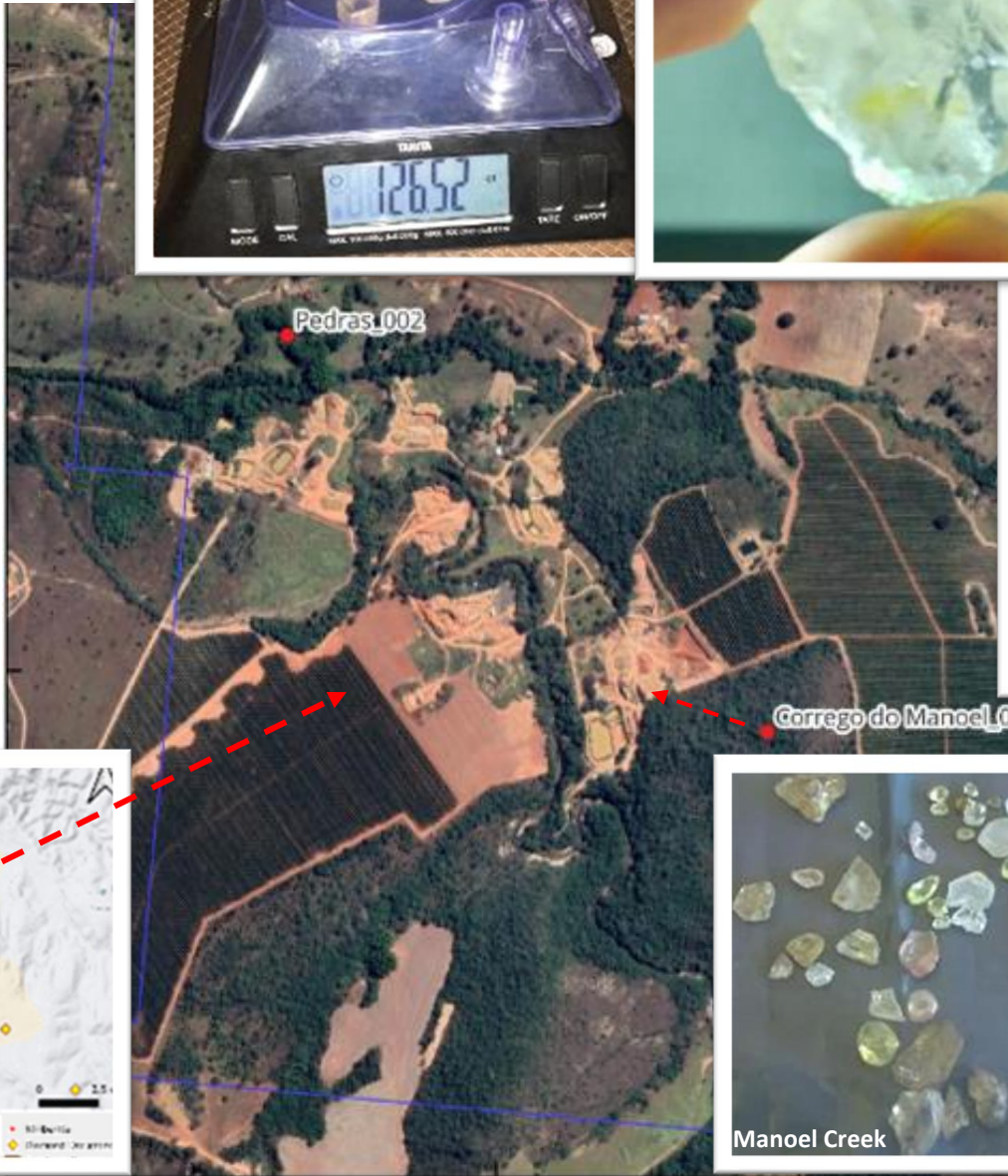




# Vendome P1 Diamond Recovery:



Manoel Creek



Manoel Creek



Manoel Creek



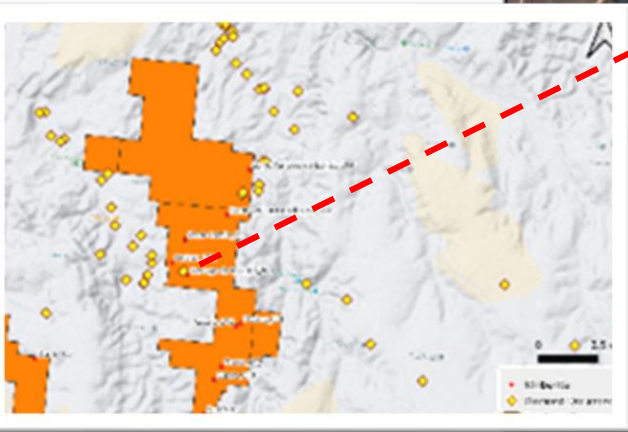
8.88cts (pink)



90.01cts



120cts (light pink)



Manoel Creek



Manoel Creek

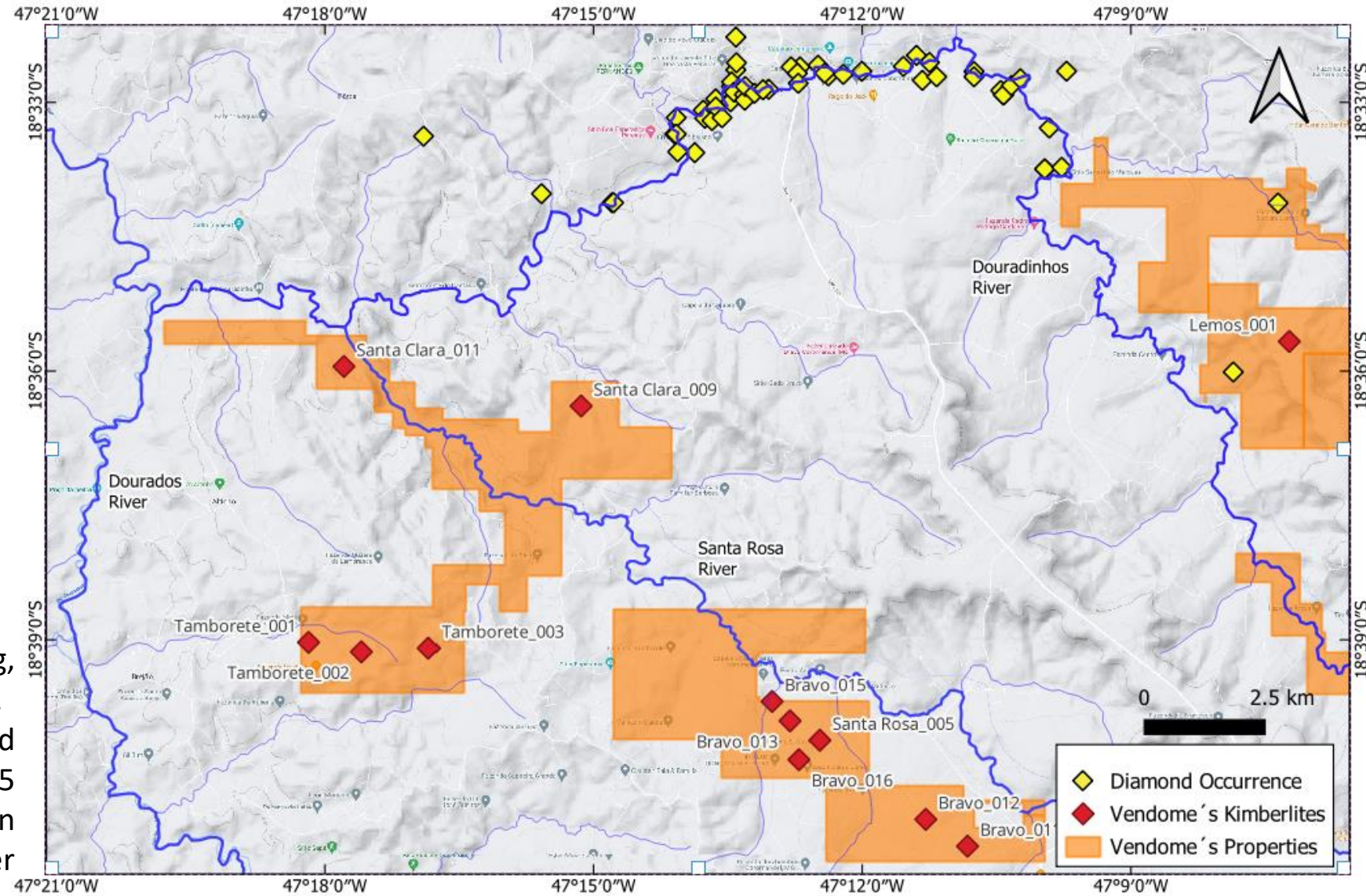
- Kimberlite
- ◆ Diamond Occurrence
- Vendome Property

### Vendome P2 - Kimberlites:

- Santa Clara 9: identified by drilling;
- Santa Clara 11: alluvial mining nearby;
- Tamborete 1: not tested/evaluated.
- Tamborete 2: not tested/evaluated.
- Tamborete 3: not tested/evaluated.
- Bravo 11: identified by drilling;
- Bravo 12: identified by drilling;
- Bravo 13: identified by drilling;
- Bravo 15: not tested/evaluated.
- Bravo 16: not tested/evaluated.
- Santa Rosa 5: not tested/evaluated.

### Property Merits:

- Santa Clara 11 kimberlite is outcropping, and alluvial mining activities downstream.
- The kimberlite occurrences could potentially be the sources of the 55 secondary diamond occurrences found in the northern limit of the property border (Douradinhos River).

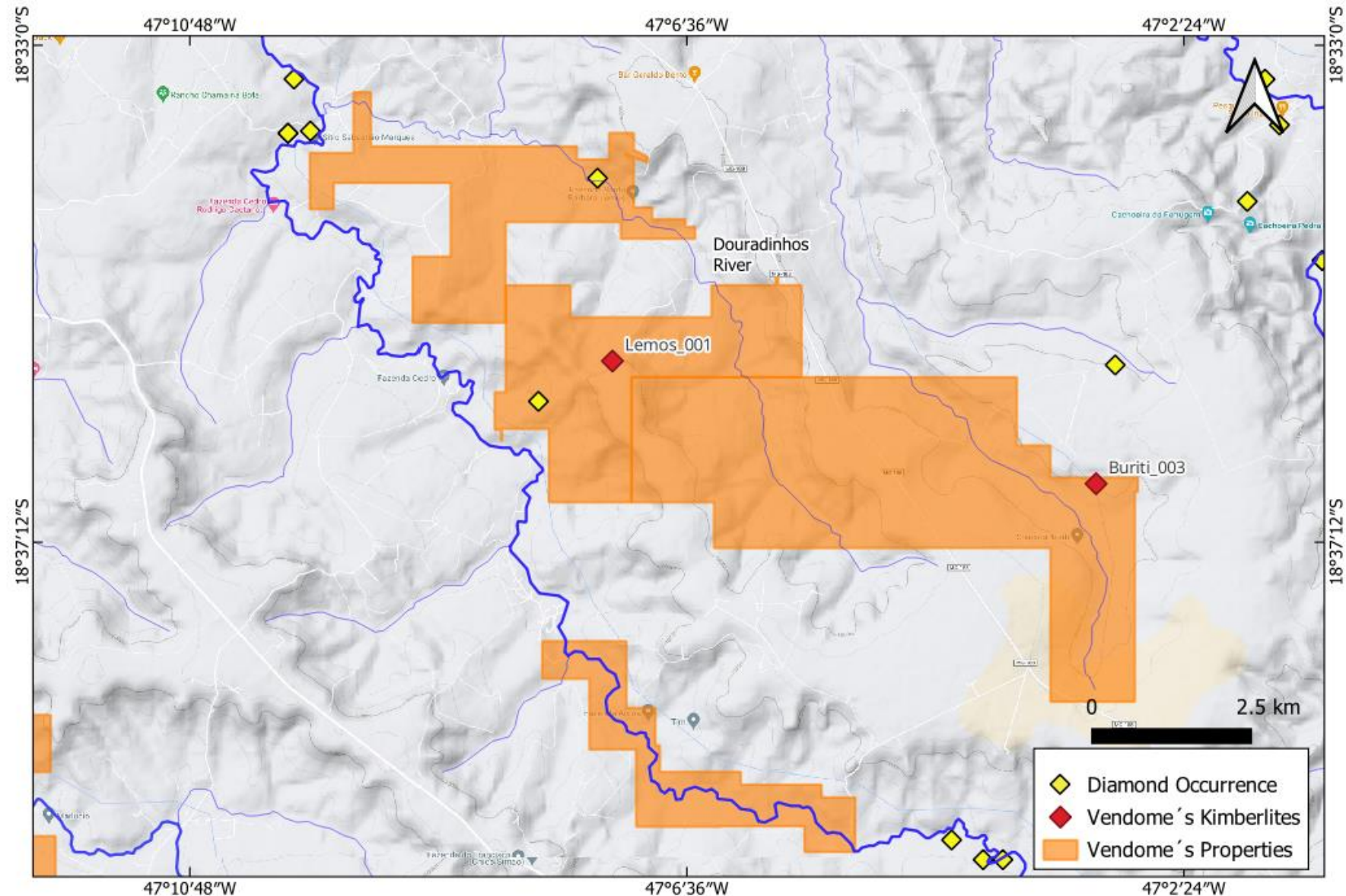


### Vendome P3 - Kimberlites:

- Lemos 1: not tested/evaluated.
- Buriti 3: not tested/evaluated.

### Property Merits:

- 2 secondary diamonds found in placers within the area;
- 7 secondary diamonds found in places surrounding the area border;
- Two occurrences of kimberlite to explore as possible sources of the secondary diamonds, and possibly the source of Rio Douradinhos diamonds;
- Possibility of finding more adjacent kimberlitic bodies.

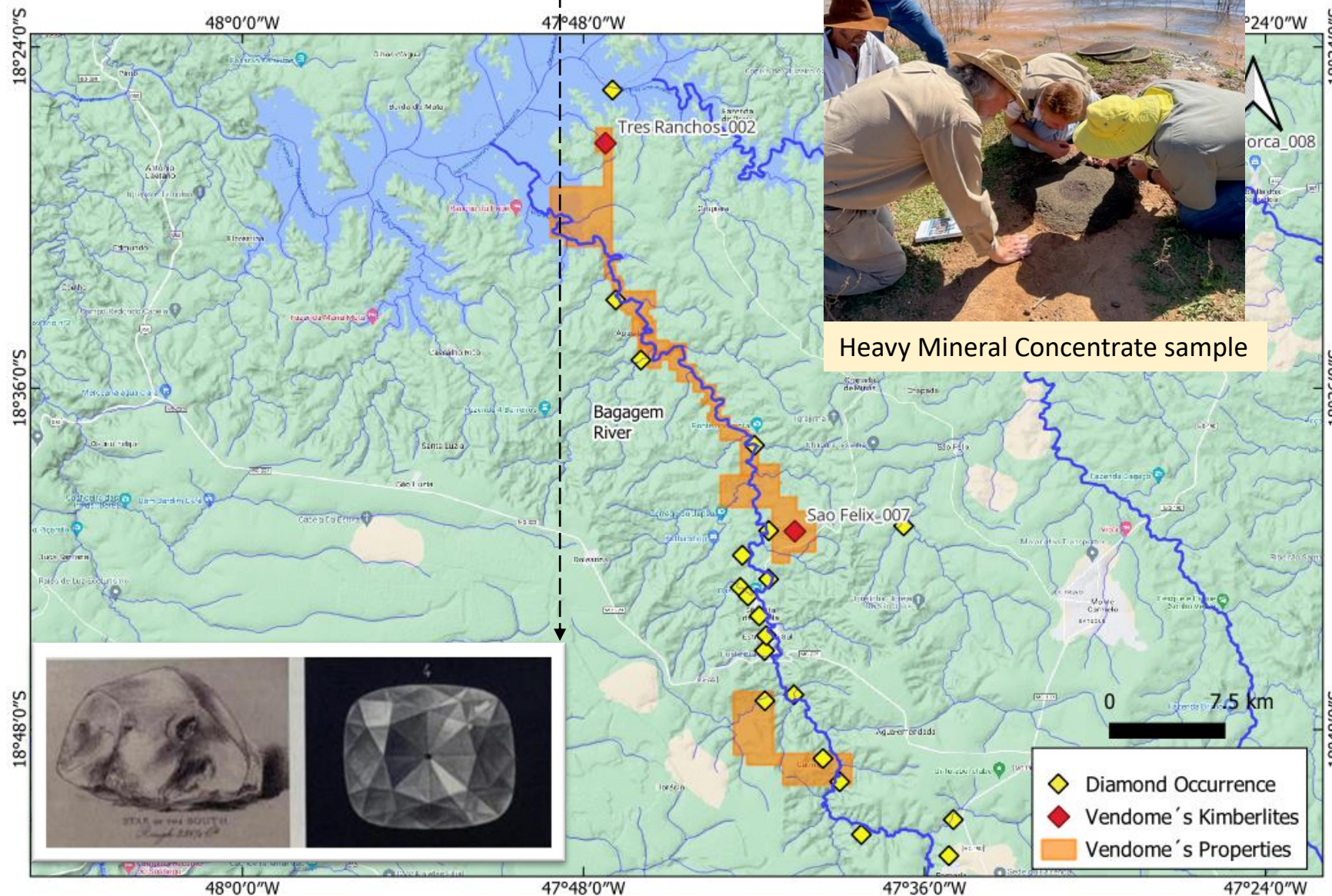




Bagagem River Diamonds - source of one of the famous Brazilian Diamonds: Estrala do Sul Diamond in 1856 (128.48cts).



Heavy Mineral Concentrate sample



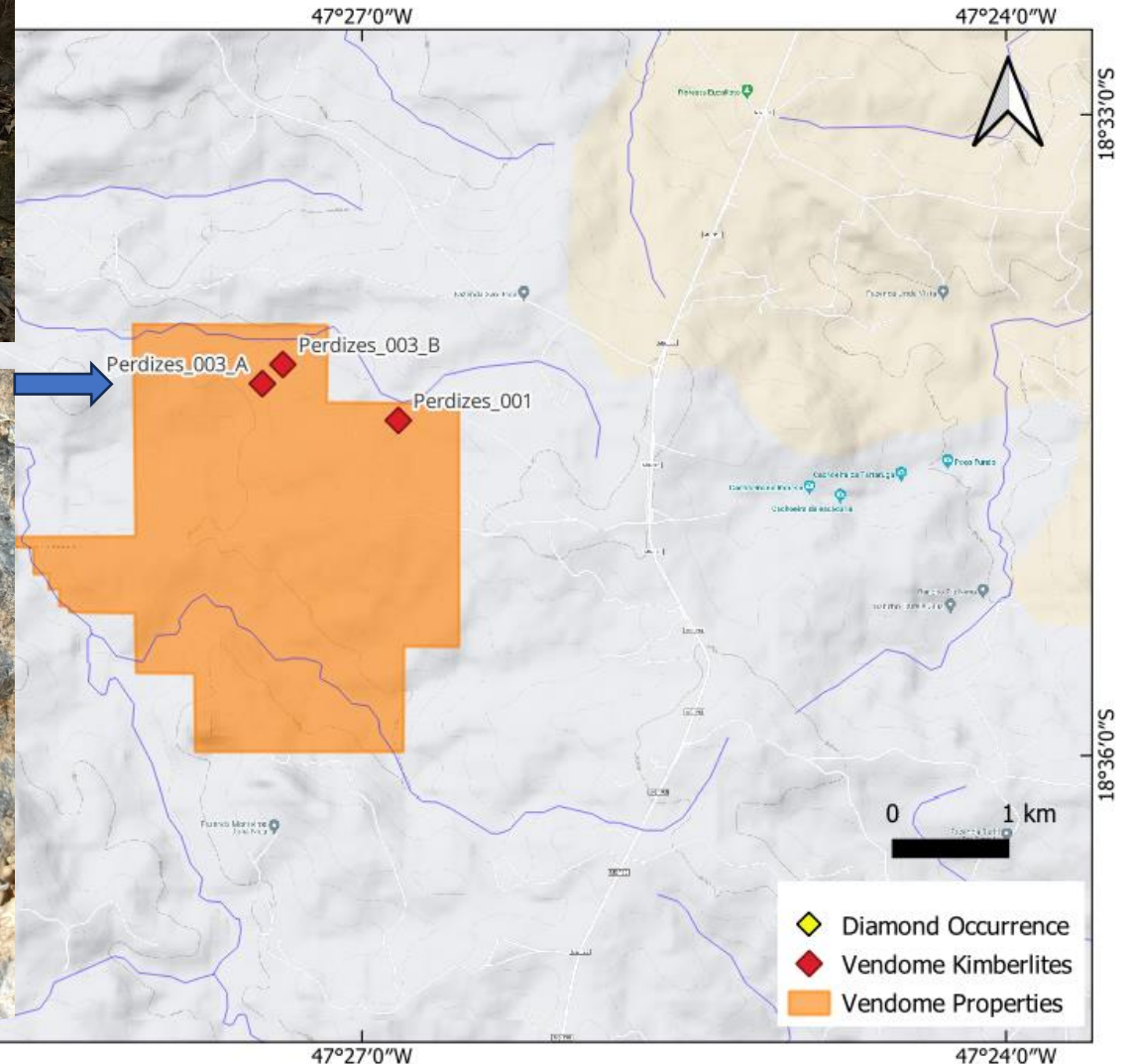
## Vendome P4 - Kimberlites:

- Três Ranchos 2: not tested/evaluated.
- São Felix 7: not tested/evaluated.

## Property Merits:

- 5 secondary diamonds found in placers within the area;
- 14 secondary diamonds found in places surrounding the area;
- Two occurrences of kimberlite to be explored as the potential sources of the secondary diamonds;
- Possibility of finding more adjacent kimberlite bodies.

Sampling Perdizes Kimberlite



**Vendome P5 - Kimberlites:**

- ❖ Perdizes 1: outcropping/not tested.
- ❖ Perdizes 3A: outcropping in drainage – De Beers excavated (148m<sup>3</sup>) (200 tonnes).
- ❖ Perdizes 3B: not tested/evaluated.

**Property Merits:**

- ❖ Kimberlites are outcropping, hyperbyssal facies, 1 diamond found in the river.
- ❖ Previous small-volume tests were carried out on surface soil/saprolite (Perdizes 3A) Groundmass of rounded olivine, chrome spinel. Sample to test fresh kimberlite rock for microdiamonds.
- ❖ Kimberlite described as a 2ha pipe for Perdizes 3A, may correlate with Perdizes 3B composing a single kimberlite pipe of larger area.
- ❖ Perdizes 1 may represent a dike marginal to the two main kimberlites Perdizes 3A and 3B.